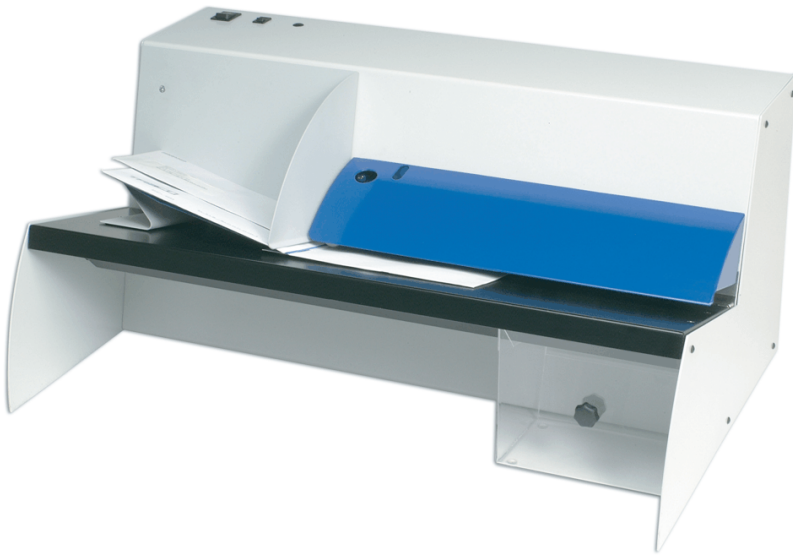


# POSTMARK AUTOMATIC LETTER OPENER

**MODEL 3050**

**Features:**



- **Milling Cutter Technology.** Protects the contents from being cut or damaged. Removes from 0 to 3mm (1/18") of the envelope edge. The removed material is in the form of tiny chips, which are deposited in the waste bin. Creates a soft, feathered edge opening, which prevents paper cuts and gives easy access to the contents.
- **High Speed.** Opens up to 32,000 envelopes per hour. Opens mixed mail - from the smallest to the largest - completely. Opens up to 1/3" (8 mm) thick envelopes. Entire system built to handle large flats and envelopes.
- **Heavy Duty.** Solid metal construction throughout. Made of steel using the highest quality components. Has 2 motors for better performance and longer life.
- **Simple and reliable.** High degree of operational reliability.
- **Easy to Operate.**
- **Options/Accessories.** Counter and inkjet printer with dater, timer, numbering and bitmaps.

## **Model 3050**

### **SPECIFICATIONS:**

<b>Length:</b>	28 inches / 710 mm. <b>Depth:</b> 18 inches / 463 mm. <b>Height:</b> 13 inches/330 mm.
<b>Speed:</b>	Theoretical speed (RPM): 32, 000 envelopes per hour.
<b>Production speed:</b>	8,000 per hours based upon a normal human being working 8 hours a day. Should you have a trained Octopus as an operator, please revert to above RPM! Envelope Size: All sizes and types.
<b>Maximum Thickness:</b>	1/3" - 8 mm.
<b>Depth of cut:</b>	From 0 (no cut) to 0.125 inch/ 3mm.
<b>Feeder capacity:</b>	Approx. 100 envelopes.
<b>Receiving tray capacity:</b>	Approx. 100.
<b>Stand and waste drawer:</b>	Table-top thus no stand. Waste drawer is included.
<b>Weight:</b>	77 lbs/35 kg.
<b>Power:</b>	115V/60 Hz or 220V/50 Hz (2 motors x 60 watts).



[www.binatek.com](http://www.binatek.com)

1201, rue de Conde, Montreal, QC - H3K 2E4 – **Phone :** 514-933-3326 - 1-800-463-0178 - **Fax :** 514-933-3756